

Reference: KBMGU10TIS-L
EAN13: 8050997113063

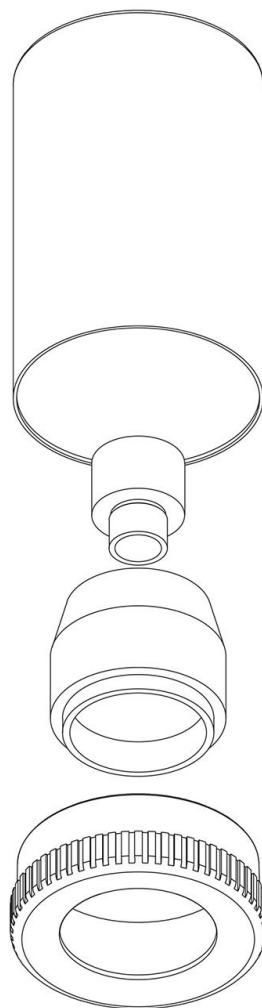
Product title:

Mini Spotlight LED GU10

Product attributes:

Finish: Matt White, Black, Brushed titanium, Brushed copper, Brushed bronze

Product image:



Product price:

\$14.90 tax included

Product short description:

Written GU1d0 but pronounced GU1d0, it is a mini spotlight for directional LED light that allows you to illuminate with an approximately 260-lumen directional beam light the bedside table when reading, your child's homework (when he eventually decides to do it), in short, any point where you need a direct and circumscribed beam of light (of about 36°).

GU1d0 is fitted with a MINI GU10 (or MR11) bulb, smaller than the normal GU10 bulb because of its 1.4in diameter and 1.8in height (socket included) that you can replace very easily by removing the silicone ring and rotating the bulb.

CAUTION GU1d0 USES ONLY THE MINI GU10. THE STANDARD GU10 DO NOT ALLOW TO MOUNT THE FERRULE!

GU1d0 has a hidden cable clamp which has an M10x1 thread at the top. This allows it to connect it to joints (like our Snodo), flexible tubes (like our Flex) or extensions.

Product description:

Technical specifications:

Kit for spotlight in different finishes

Total diameter 1.7in

Total height 3.0in

Upper hole: M10x1

1 GU10 socket with push-fit connectors

Rated voltage: 250 V

Rated current: 2kV

Press-in terminals for cables 0.00077 in2 : 0.0011 in2

Certificazioni: EN60838-1:2017+A1

Mini GU10 LED light bulb:

Connection: Mini GU10 (MR11)

Volts: 110-240V

Energy class: F

Light colour: 2700 K

Watts: 3.2W

Lumen output: 260 Lm

Dimensions : D 1.4in ; H 1.8in

Dimmable: NO

Product features:

Material: Metal

Material: Silicone

Fitting: GU10

Product gallery:

