

Reference: US-NG20RF15
EAN13: 8057730931649

Product title:

Creative-Tube flexible conduit, Solid Color Fluo Orange RF15 fabric covering,
diameter 20 mm

Product attributes:

Product image:



Product price:

\$2.00 tax included

Product short description:

Creative-Tube is much more than just a fabric-covered conduit!

In fact, thanks to the metal filaments that run throughout its entire length, Creative-Tube can assume and maintain any shape you give it. The only limit to Creative-Tube applications and uses will be your imagination!

The 20 mm size Solid color Fluo Orange Rayon fabric covered Creative-Tube rids you of all those ugly plastic electrical conduits & rigid metal pipes that cross the walls of your workplace or studio, giving you the creativity to draw on your walls and ceilings with a trace of color and design that you desire.

Thanks to the range of unique accessories developed by Creative-Cables, you can:

- connect the Creative-Tubes to junction boxes.
- directly connect the ceiling roses of your wall or ceiling lamps.
- create an electrical system complete with sockets and switches you will gladly display, instead of hiding in the walls!

You can use Creative-Tubes for exterior walls. Their internal material complies with CEI-EN 61386-1 + EN 61386-22 Classification 3321 and it is IMQ certified.

Creative-Tube is sold per foot, multiple orders will be delivered in one piece up to a maximum of 164 feet.

Don't find the Creative-Tube color you want? Contact us: we can make it for you!

Product description:

Classification No: 3321

Crushing resistance: >750N on 5 cm at 20°C

Schock resistance: (-15°C) after applying 2 kg mass hammer

Operating temperature: -5°C to +60°C

Resistance to flame propagation: self-extinguishing VO

Dielectric strength: 2000v at="" 50hz="" br=""> Insulation resistance: >100 mega ohm

Diameter: 20 mm

Color: RF15 Solid Color Fluo/Neon Orange Rayon

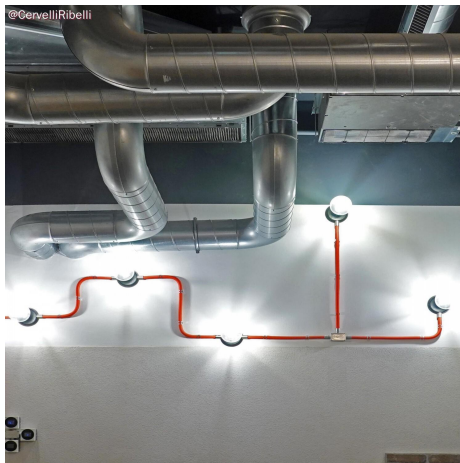
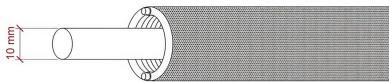
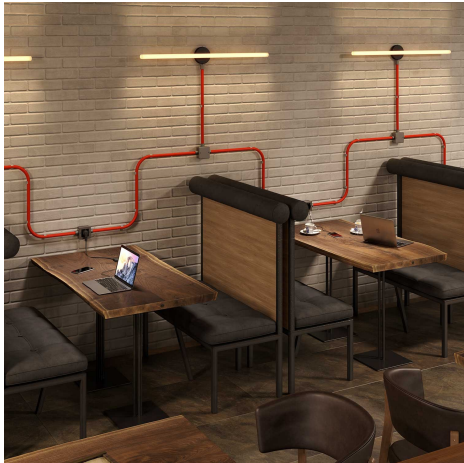
According to the CEI 64-8 standard, to guarantee the cable removal, the maximum useful cross-section of cables inside the Creative-Tube can be 10 mm for a Tube up to 10 metres long. Up to 20 metres, the maximum thickness will be 9 mm.

Due to the shape of Creative-Tube, once positioned it is necessary to cut the pieces of metal filament that protrude from the limit of the pipe, before you can install the accessories or connect it to the junction box.

Product features:

Style: Round
Fabric: Rayon
Maincolor: Red
Pattern: Solid

Product gallery:



@creativecables

