

Reference: TLCAT02
EAN13: 8057730898348

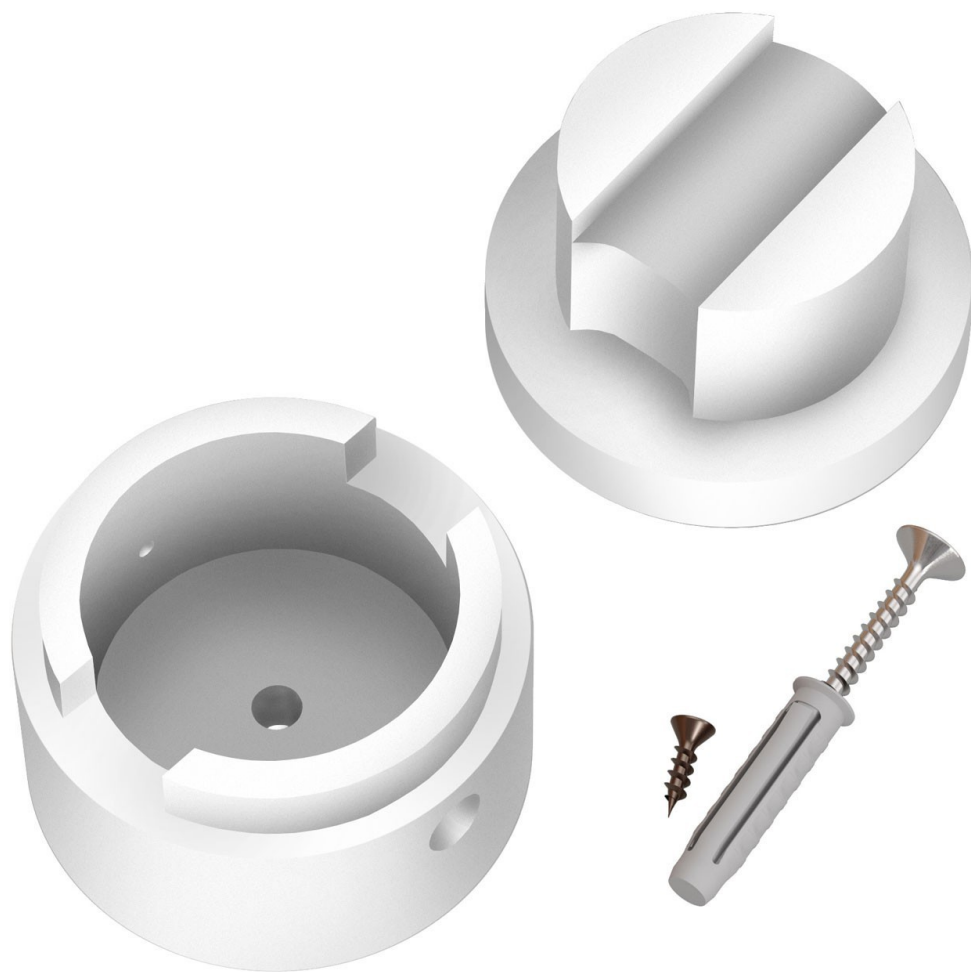
Product title:

Wood String Light Terminal Block kit

Product attributes:

Finish: White, Black, Neutral

Product image:



Product price:

\$13.20 tax included

Product short description:

This wooden terminal block kit is used in our Filé system and made for use with our custom string lights cables.

Here's how it works. Just place the piece of the wood terminal block with the hole in the center on your wall or ceiling and use the included screw to attach it in place. Next insert the end of the string light cable into this piece. Then place the larger top piece of the wooden terminal block over the cable and base wood piece (with the opening side facing the incoming cable) and screw the two pieces of the wooden terminal block in place with the included screw. That's it, your done!

This product is one of the base components in our Filé system. It can be matched up with other Filé components (wooden socket cover kit, wood string light canopy cover, and wood fairlead kit) and our string light cables to create your own originally designed wall or ceiling lights.

This piece is craftmade in Italy in our small workshop from Italian poplar. The natural wood can be painted or stained to whatever color you wish.

What's in the box? Included is the two-piece wooden terminal block with 1 wood screw for attachment to your wall or ceiling and 1 screw for attaching the two pieces of the wooden fairlead together.

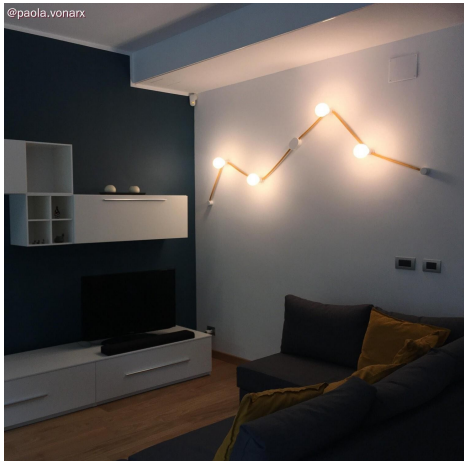
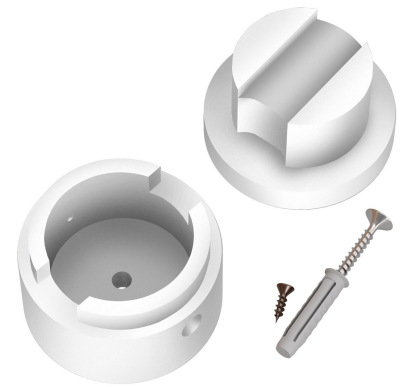
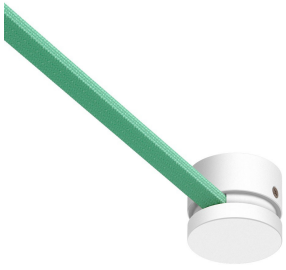
Product description:

Dimensions: Height 1.5" & Diameter 2"

Product features:

Material: Wood

Product gallery:



@paola.vonax