

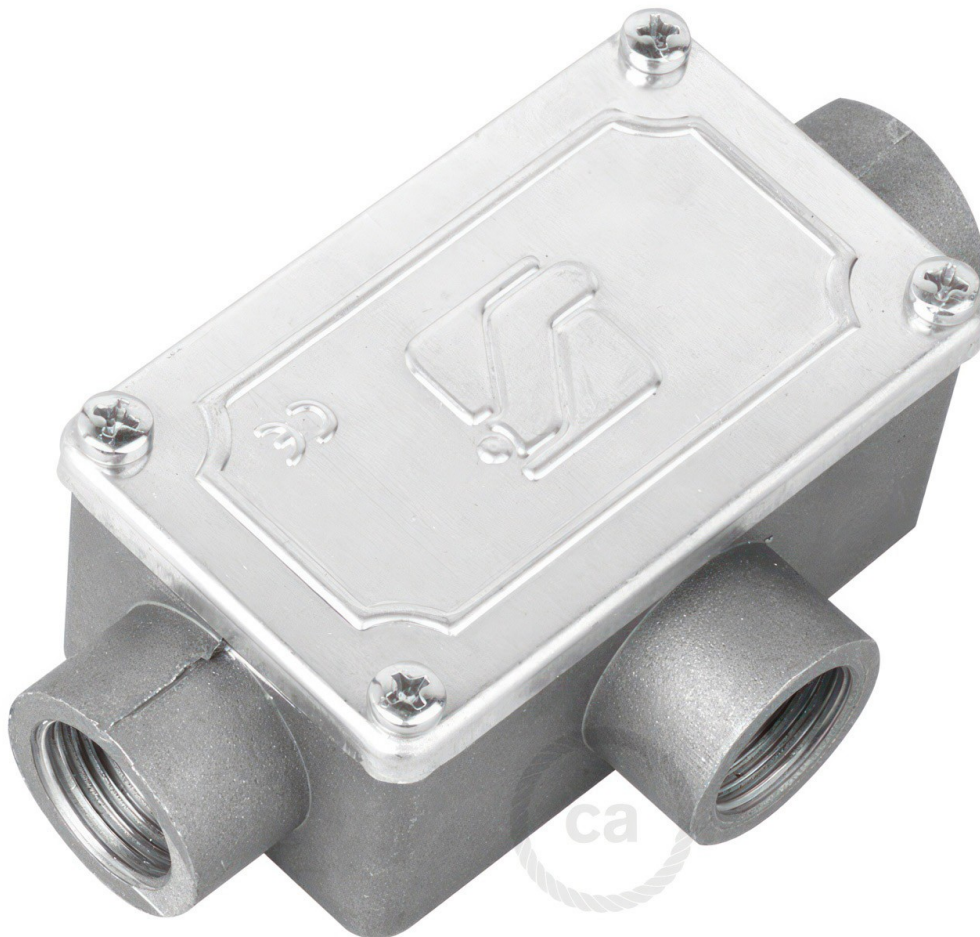
Reference: DER3-1
EAN13: 8057730720410

Product title:

Three-outlet, T-shaped Junction box for Creative-Tube, aluminium case

Product attributes:

Product image:



Product price:

\$37.40 tax included

Product short description:

Combine this junction box with our collection of special accessories (accessories available in 4 metal finishes) and you can connect almost every kind of light socket lampholder and bulb from our catalogue to this connection. For example, you can combine our 20mm Creative-Tubes with our 20mm metal cable terminals to connect them to any of our canopies with side holes. Then you can connect our tube to any standard junction box and connect to a switch to make a customized pendant light that runs on the outside of walls. You'll no longer be limited to only in where you want to place a light with a wall switch. And no more worries about drilling holes to run wires inside of your walls! Just bend Creative Tube to the desired shape and let it enlighten your home!

Product description:

Three-outlet, T-shaped aluminium junction box with earthing connector.

Case: Die-cast aluminium UNI EN 1706 (ex UNI 4514) with threaded outlets

Lid: Pressed aluminium plate with flat gaskets, IP55 watertight

Cover fixing and earthing screws are made of galvanized steel

Ingress Protection Rating: IP55

ISO thread: ISO M20x1,5

Product features:

Material: Aluminium

Product gallery:

